

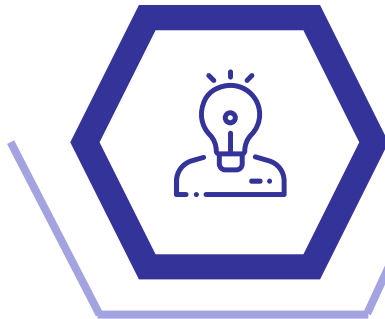


What project managers REALLY need to be successful

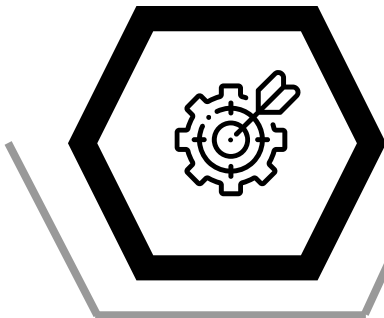
Projects fail in organizations for many reasons, but the fundamental challenge is that large organizations are complex and even the smallest change is difficult.



To be successful, project managers require a comprehensive skillset to successfully navigate such a complex environment.



PeoplePM® combines a proven learning approach with artificial intelligence to give project managers the enhanced capability they need.



Six month program that changes the way experienced project managers think & act



Intellilink Solutions, Inc.

575 Madison Avenue, 10th Floor, New York, NY 10022

(212) 456 3100

www.intellilink.com

info@intellilink.com

Amsterdam



New York



Singapore



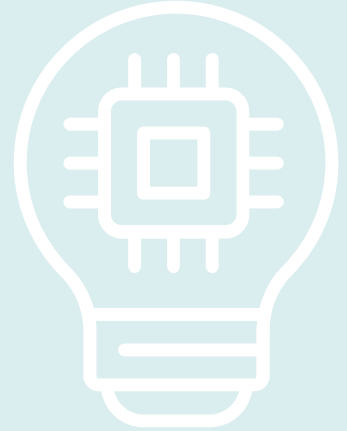
Sydney

peoplePM®

What is PeoplePM®?

PeoplePM® is a behavioral change program that helps experienced project managers successfully complete projects in complex organizations.

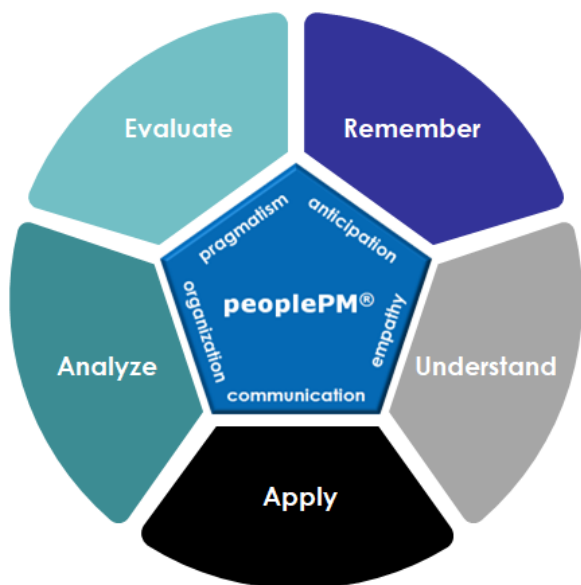
The PeoplePM® learning methodology is based on Bloom's Taxonomy¹ and uses the five PeoplePM® Attributes as building blocks to improve seven critical Project Manager Power Skills. These skills are further enabled with the use of the PeoplePM® AI Coach, an artificial intelligence tool that enhances the performance of PeoplePM® trained project managers. PeoplePM® 360 Degree Assessments at the beginning and end of the program measure attendee and program performance.



The PeoplePM® Program

PeoplePM® 360 Degree Assessment

PeoplePM® Attributes



AI Enhanced Project Manager Power Skills

- Stakeholder Management
- Negotiation
- Conflict Resolution
- Leadership
- Planning
- Risk Management
- Change Management